

Standard Handling Instructions for TIJ2.5 Ink Cartridges



1. Storage

- Store the cartridge with the attached blue gel clip at the recommended conditions 15–35°C, 40-60%. (See Image A)
- Store the ink cartridge in a “Nozzle Up” position to keep the nozzles healthy. Keep the cartridge away from direct sunlight.
- The shelf life is guaranteed for unopened products. Once the vacuum-sealed package is opened, use the cartridge as soon as possible.
- Depending on storage conditions and duration, the decap time may decrease even before the expiry date, even if the clip is attached.
- For UV LED-curable inks, store the cartridge in a lightproof package, such as an aluminum bag. These inks can cure when exposed to sunlight or ambient room light, which may result in nozzle clogging.
- When using a printer without a capping or wiping function, remove the cartridge and store it when not in use, as print quality may deteriorate due to environmental conditions.



2. Use

- **Refer to the Safety Data Sheet (SDS) before use for proper handling.**
All solvent-based and UV LED-curable inks contain alcohol-based solvents. Ensure proper ventilation in the room while using the products.
- **Do not use the cartridge where the printhead is directly exposed to wind or airflow.**
Airflow may dry the nozzles or alter ink drop direction, leading to print defects.
- **Avoid use under high temperature or high humidity whenever possible.**
Such use is generally not recommended, as it may cause missing or misaligned prints.
- **Wipe the printhead with a dry, lint-free cloth before use, and do the same during maintenance while in operation.** (See Image B)
- **Do not subject the cartridge to shock or vibration.**
When the clip is removed, do not shake, drop, or carry the cartridge roughly. Such handling may allow air to enter the nozzles or cause bubbles inside the cartridge, resulting in printing failure or head damage.
- **When using pigment-based solvent- or UV LED curable-ink, shake the cartridge vertically with its clip for 30 seconds before use and every 1 hour during operations.** To prevent clogging, it is recommended to use the both nozzles. For detailed instructions, please refer to the instruction sheet for each product.
- Dispose of the cartridges in accordance with local, regional, national, and international regulations.
- **Conduct sufficient testing** with your target media and actual conditions before official operation.
- **Verify the operating parameters and maximum firing frequency** before use.
- **Avoid frequent purging**, as it may cause kogation (burned head). Clean the printhead properly instead. Ensure that the cartridge is not damaged by the printer’s driver pins when installed. (See Image C)
Physical damage may disconnect internal wires and cause malfunction.

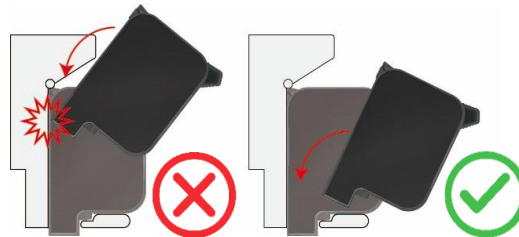
Image A



Image B



Image C



3. Possible Causes of Printing Issues

Common causes of missing prints (as shown below) include:

- Wire disconnection due to cartridge damage.
- Poor electrical contact caused by dirt or dust on the cartridge’s electrical pads or the printer’s driver pins.

A damaged cartridge cannot be recovered. When inserting the cartridge into the printer, handle it carefully to avoid damaging the printhead. Dropping the cartridge or using improper wiping methods can also cause damage, so please take care.

If the issue is caused by poor contact, it may be resolved by cleaning the pads and pins.

- ▶ If you need support with any issues, please feel free to contact us or your place of purchase.



Discover more about our products and how you can make the most of them.



LinkedIn



Youtube



www.general.co.jp

Note: The above instructions are general guidelines for our TIJ2.5 ink cartridge products. The optimal handling may vary depending on the product, printer, media, and environmental conditions. Therefore, these instructions may not apply to all products or situations. If you have any questions or need further guidance, please contact us.